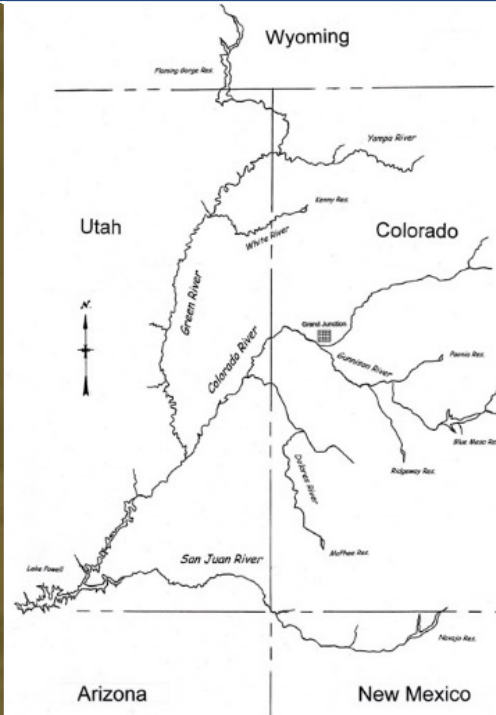


STReaMS: Beta Version of the Web Database

3/9/2015



Kirstin A. Holfelder, & Amy Greenwell
Colorado Natural Heritage Program
Warner College of Natural Resources
Colorado State University
www.cnhp.colostate.edu



WARNER COLLEGE OF
Natural Resources

Colorado
State
University



Outline

- Introduction
- Schedule
- A broad view of the database design
- A walkthrough of the live web database



Introduction

The development team:

- Kirstin Holfelder – PI & Primary Developer
- Amy Greenwell – PI & Data Coordinator
- Rob Schorr – Zoologist, Tester
- Michael Menefee – Server & IT Management
- Other programmers:
 - Russ Scarpino, Greg Newman, Swapnil Ashtekar, Rob Fredericks



Schedule – Year 1

Core database and website features

- Data entry forms
- User and role management tools
- Help and user manual
- “Canned”, most-popular downloads
- Integrate readily accessible datasets

September, 2015



Schedule – Year 2

Advanced features

- Query builder
- Quality control tools
- Batch uploads
- Automatic uploads (data loggers etc.)
- Revision tracking component
- Online database dictionary
- Track down legacy data, other sources

September, 2016



Schedule - Year 3

Maintenance & enhancements

- All the stuff we didn't know we'd need
- Data crosswalks from more difficult data sources

September, 2017



Monthly Development Cycle

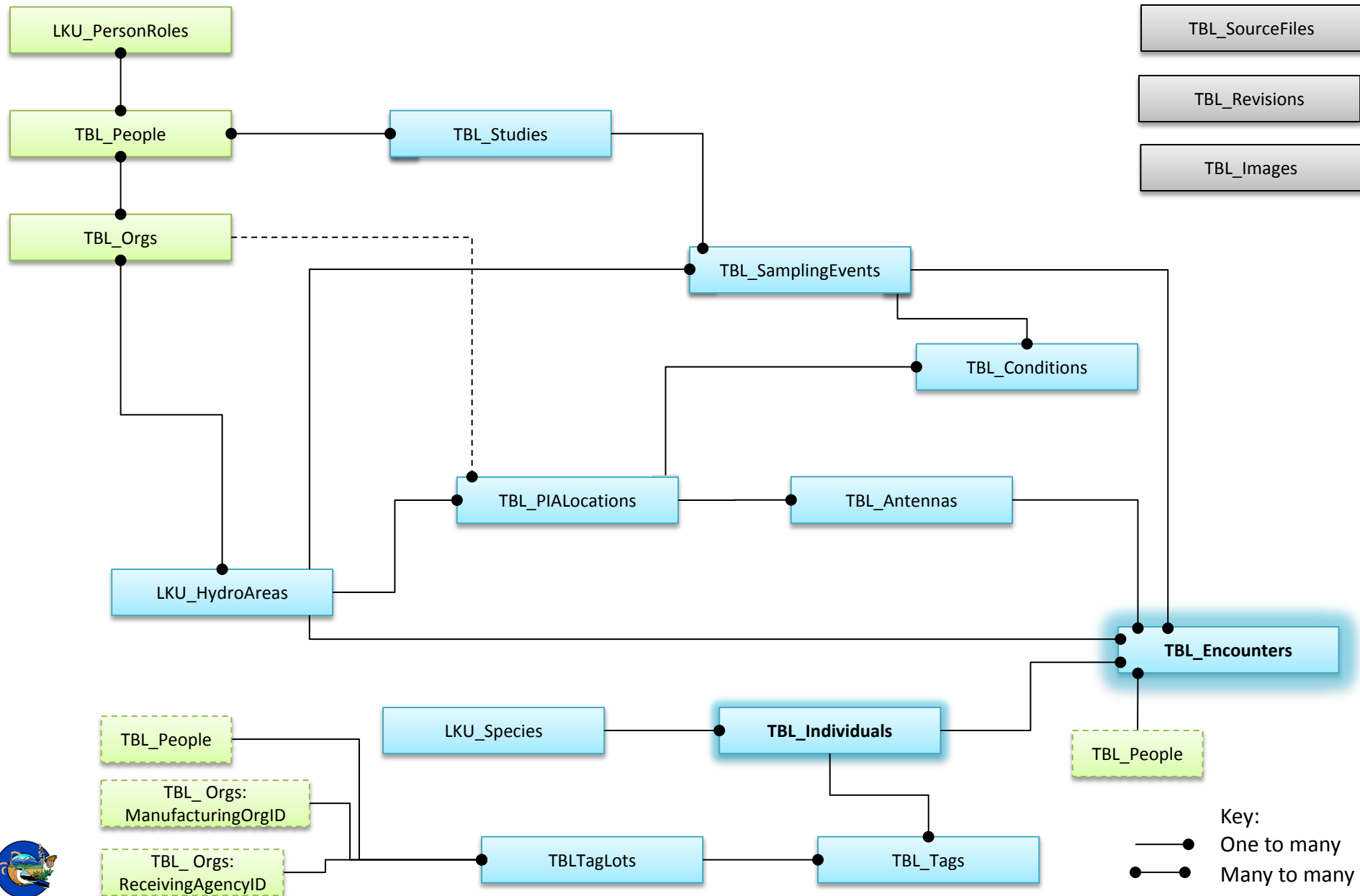
A new version of the website every month

3 weeks of development

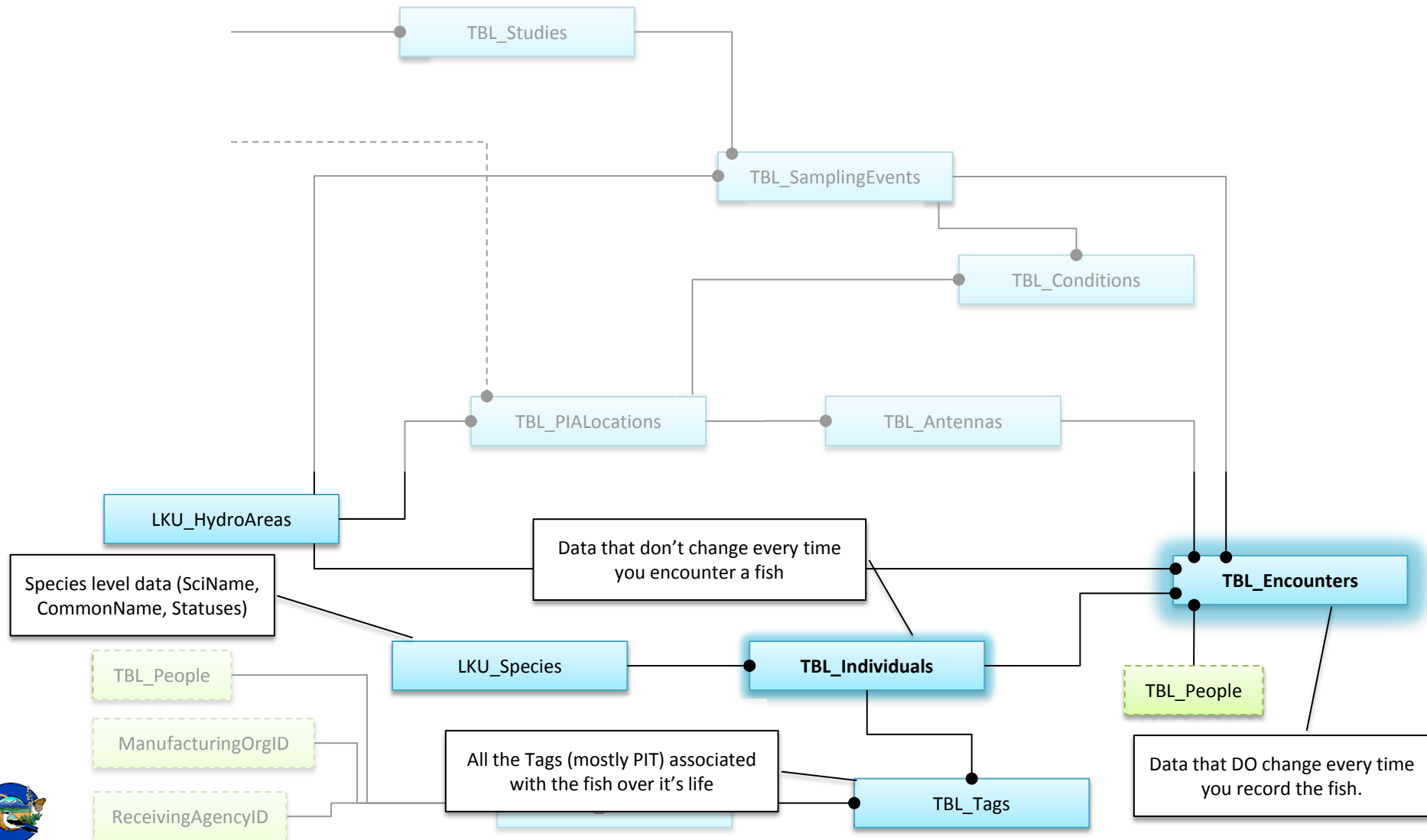
1 week of testing



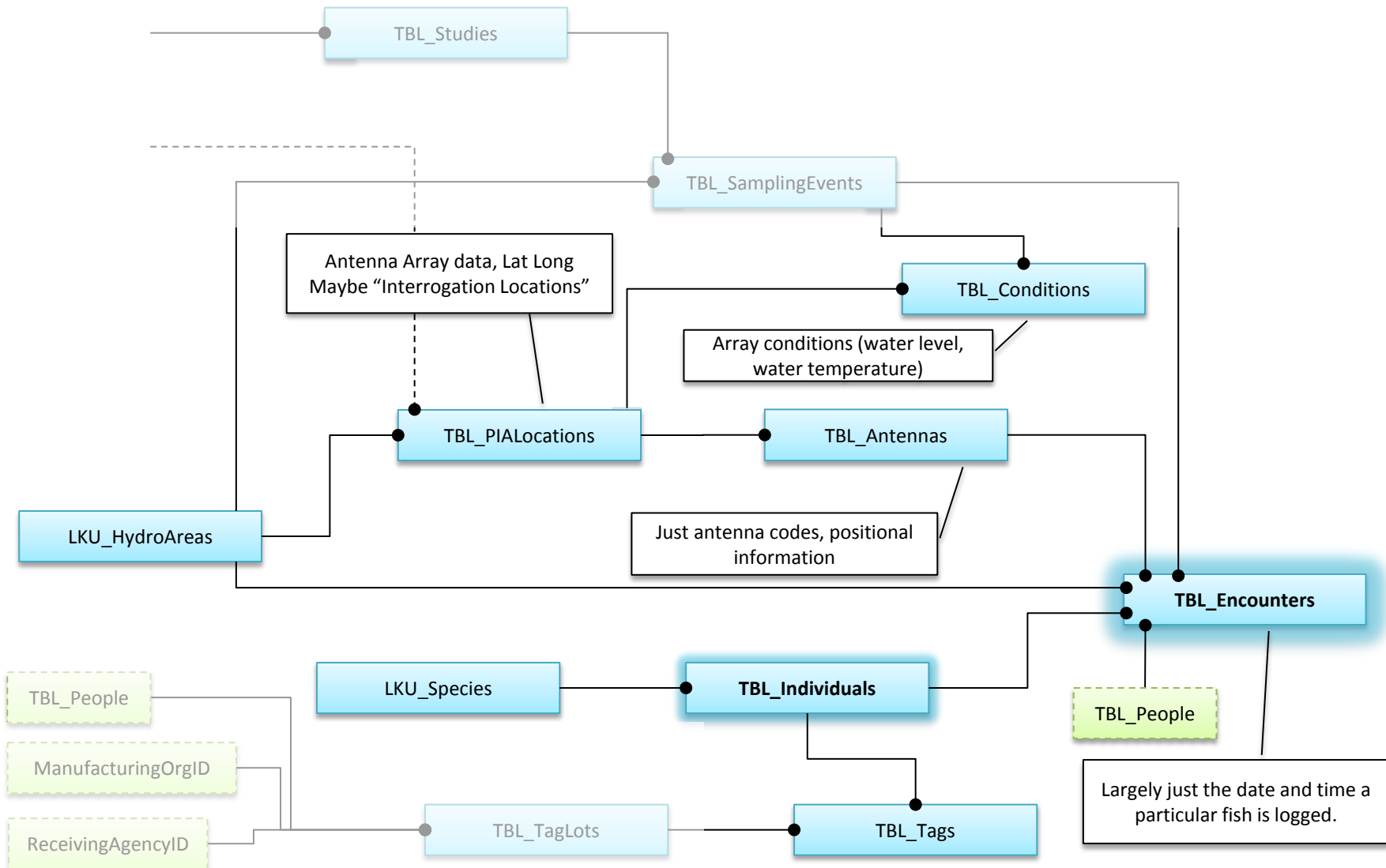
Core Database Tables – ALL*



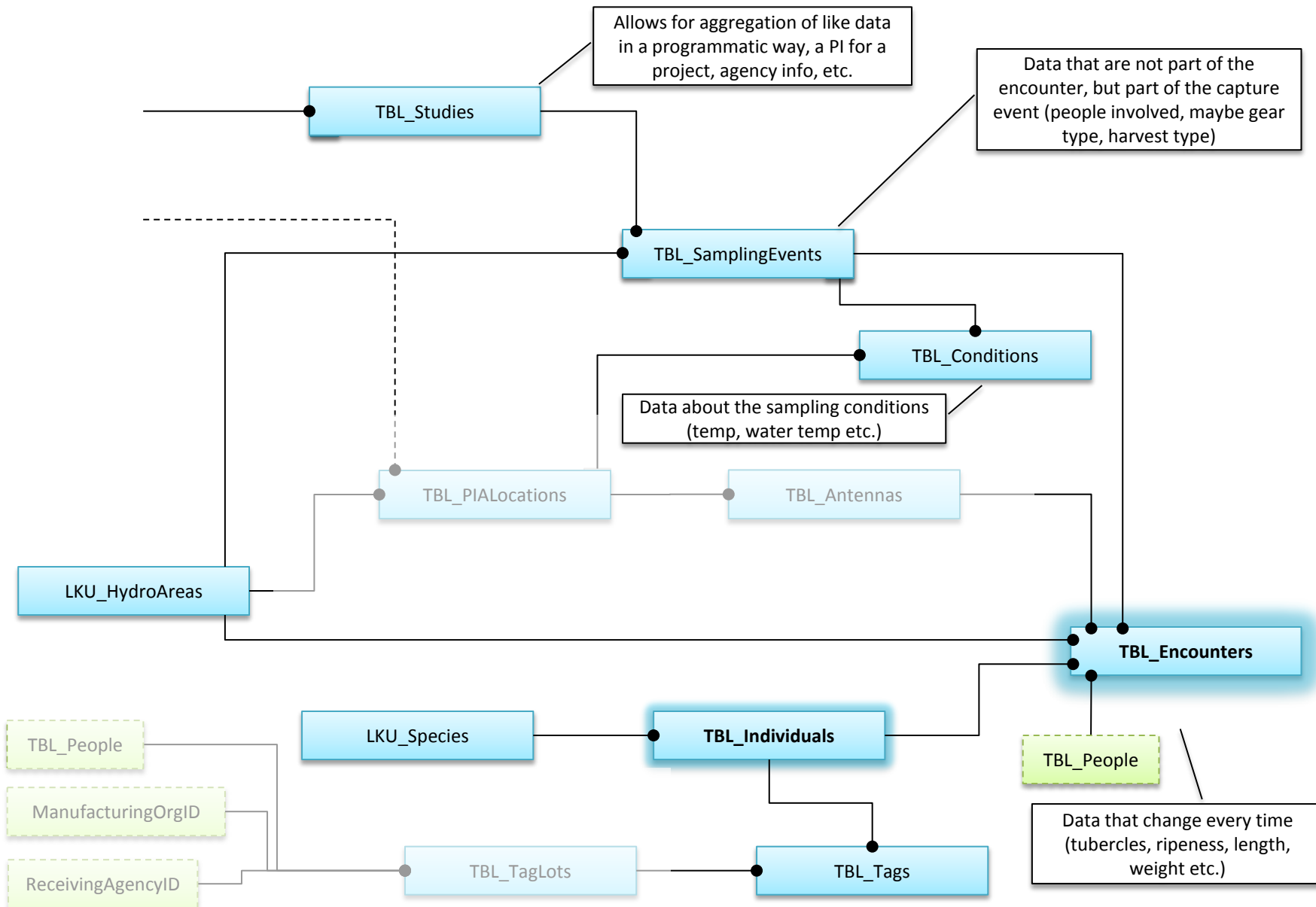
Core Database Tables - Fish



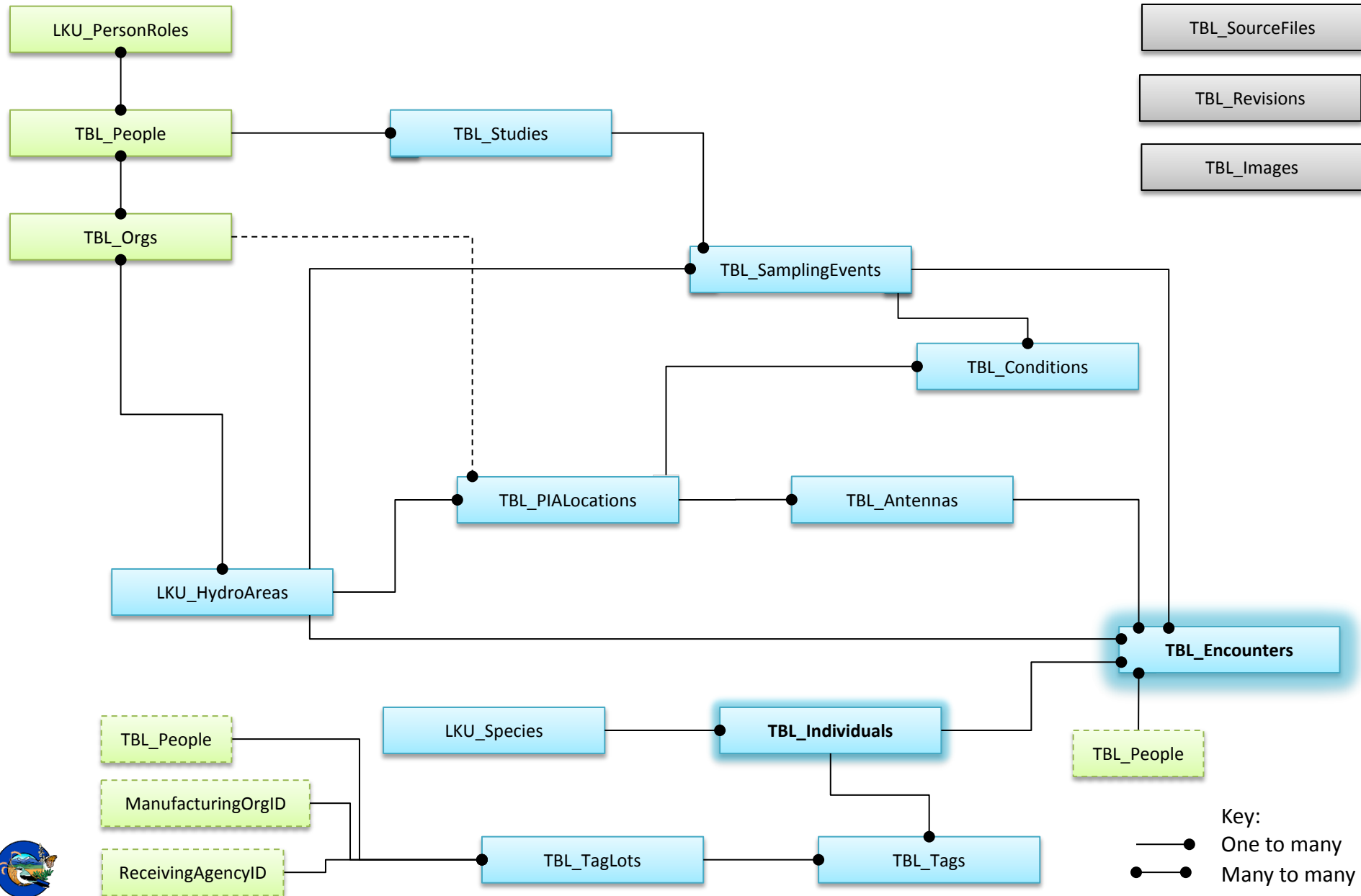
Core Database Tables - Detections

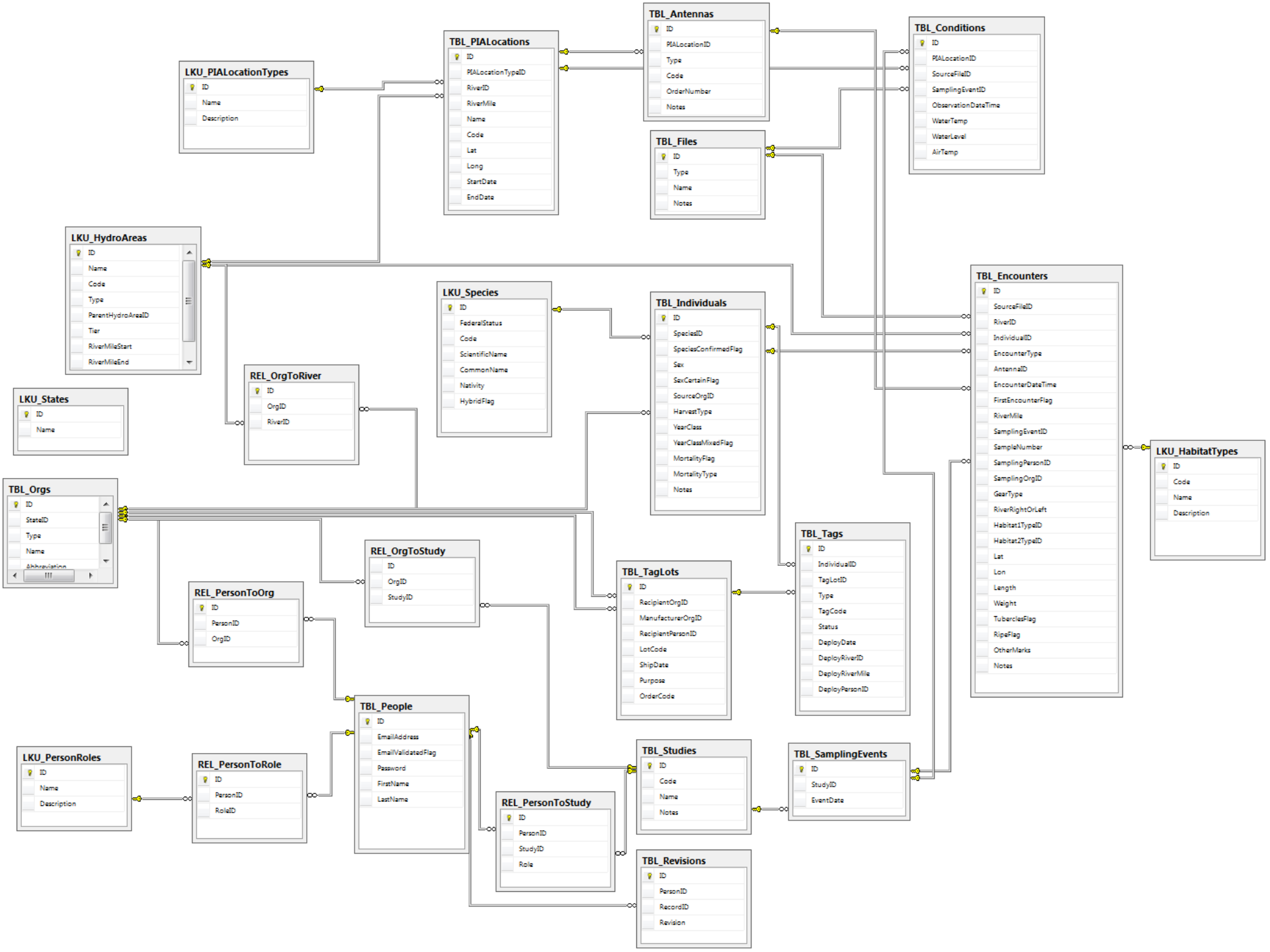


Core Database Tables – Captures/Stocking



Core Database Tables - ALL





Before we look at the website...

- The data are messy
- The design is “functional”
- Most features are for browsing legacy data
 - NOT inputting lots of data at once
- Some features (tooltips, unlimited queries) just aren't finished
- Performance will improve

Goal: Identify major gaps in usability



384.1B795AA4FB
384.1B795AA502
384.1B795AA505
384.1B795AA533
384.1B795AA541
384.1B795AA548
384.1B795AA54A
384.1B795AA70E
384.1B795AA713
384.1B795AA720
384.1B795AA729
384.1B795AA731
384.1B795AA745
384.1B795AA747
384.1B795AA753
384.1B795AA756
384.1B795AA759
384.1B795AA75A
384.1B795AA75B
384.1B795AA75F
384.1B795AA761
384.1B795AA762
384.1B795AA763
384.1B795AA765
384.1B795AA76A
384.1B795AA76B
384.1B795AA76E
384.1B795AA772
384.1B795AA773

Upper Colorado River Basin

Subregions

