

Release Notes (1/13/2017)

New Features

- **Batch Uploads for Rare Fish, Stocked Fish, Site Effort, and Stocking Events are active** – Data can be loaded into STReaMS through the website. For now, contact your Database Manager, Julie Stahl (UC) or Scott Durst (SJ), to upload your data. You will need to pre-format your data using the latest data entry templates online here:

<https://streamsystem.org/webAdmin/dataEntryTemplates.php>



- Your Database Manager will select your Study, Upload File, and Data Type.

Batch Upload: Sampling Effort and/or Stocking Event

File Name: stocking template_v6_14_2016_SLD.xlsx
Study/Program: Razorback Sucker Augmentation

Select worksheet and data type you would like to import data for:

Show entries

Search:

Worksheet	
<input checked="" type="checkbox"/> stocking	<div>--Select Data Type-- Rare Fish Datasheet Rare Fish Site-Effort Datasheet Stocked Fish Datasheet Stocking Event Datasheet --Select Data Type--</div>
<input type="checkbox"/> stocking metadata	

Showing 1 to 2 of 2 entries

Previous Next

Analyze Selected Worksheet

- Steps are tracked along the way and you can cancel at any time.



Batch File Upload Process:

1. Select Study/Program and Excel data file to upload.
2. **Select Excel worksheet and data type and submit it for data validation.**
3. Fix any data validation errors.
4. Upload file to database.
5. Review your data in STReaMS.

Cancel Upload

- Your Database Manager will fix any data entry errors.

Total Number of Rows with Errors = 3

Show 10 entries

Field Name	Total Errors #
Species	1
Stock River	1
Stock RMI	1

Showing 1 to 3 of 3 entries

Previous 1 Next

Worksheet : stocking										
View/Edit Errors										
<div>Analyze Updated Data Full Screen</div>										
Show 5 entries										
<input type="checkbox"/>	Pit Tag 134	Rec Num	Stocking Number	Species	Stock Year	Stock Date	Stock River	Stock RMI	Leng	
<input type="checkbox"/>	3DD003BA1C4AF	2015_RZ_SJRRIP_3798	NAPI20151027RZ_2	RZ	2015	2015-10-27 00:00:00	AN	600	342	
<input type="checkbox"/>	3DD003BA1C0F1	2015_RZ_SJRRIP_3794	NAPI20151027RZ_3	RZ	2015	2015-10-27 00:00:00	SAN JUAN	195.6	342	
<input type="checkbox"/>	3DD003BA1BA6B	2015_RZ_SJRRIP_3804	NAPI20151027RZ_2	ZZ	2015	2015-10-27 00:00:00	AN	5	341	

- Batch Upload: Sampling Effort and/or Stocking Event

File Name:

stocking template_v6_14_2016_SLD.xlsx

Study/Program:

Razorback Sucker Augmentation

Current Worksheet:

stocking

Worksheet Name	Data Type	Data Validation Status
stocking	stocked_fish_datasheet	Complete

Data validation successful!

Upload Data into Database!

- Wed 11/9/2016 11:05 AM
- STReaM System Administrators <streams@colostate.edu>
- Your STReaMS Upload is Finished**
- To Greenwell, Amy
- Hello Amy Greenwell,
- Your upload has finished in 30.39 seconds.
- 4 New Tags
346 New Individuals
347 New Encounters
3 Records Rejected
0 Records Flagged
[View Upload #1 Details](#)
- STReaM System Admins

- **Use My Profile to track your Uploads** – Your Uploads are listed in your user profile. Search or sort your list. Click details to display information about the Upload, notes from the system, and the number of new records, rejected records, and flagged records.

- Your list of Uploads.

Edit My Profile

Required fields are indicated with an *.

Personal Information

First Name*:

Last Name*:

Organization:

Role*:

Email Address*:

Password:

Inactive?: ☐

Other Details

Uploads

Show entries

Search:

ID	Upload Date	Upload Type	Study Name	File Name	New Encounters	Flagged Records	Rejected Records	Option
1	11/09/2016 11:01:46 AM	Stocked Fish Data	FWS-GJ 2015 RZ Stocking	2015_CDOT_BESWICKS_stock(3).xlsx	348	0	2	<input type="button" value="View Details"/>
2	11/09/2016 11:17:43 AM	Stocked Fish Data	FWS-GJ 2015 RZ Stocking	2015GJMASTERSTOCK.xlsx	3032	0	0	<input type="button" value="View Details"/>
3	11/09/2016 11:29:44 AM	Stocked Fish Data	FWS-GJ 2015 RZ Stocking	2015_RZ_061815_OLD BROOD_Fruit.xlsx	151	0	0	<input type="button" value="View Details"/>
5	11/09/2016 12:01:05 PM	Stocked Fish Data	FWS-GJ 2015 BT Stocking	2015_CDOT_BESWICKS_stockBT.xlsx	1	0	0	<input type="button" value="View Details"/>
8	11/09/2016 01:17:58 PM	Stocked Fish Data	J.W. Mumma 2015 BT Stocking	mumma BT 2015 CO River #2.xlsx	4969	0	0	<input type="button" value="View Details"/>

Showing 1 to 5 of 55 entries

Previous

...
Next

- Upload details show basic information about the Upload with links to the source files and Table of Contents.

Upload 1 Details

New Records

Tag List

Individual List

Encounter List

Flagged Records

Individual List

Rejected Records

Upload 1 Details

Study/Program: FWS-GJ 2015 RZ Stocking

Upload Type: Stocked Fish Data

Uploaded By: Greenwell, Amy (On Nov-09-2016 11:01:46 AM)

Source File: 2015_CDOT_BESWICKS_stock(3).xlsx

Clean File: Clean_2015_CDOT_BESWICKS_stock(3).xlsx

New Records

Tag List

Show entries

- **Uploads are managed by the Database Managers through the Manage Uploads page in the footer** – The Managed Uploads page lists Uploads for all Users, all rejected records, all flagged records, and Upload rules for numeric fields.

- Upload list can be used to track data submittals for Studies.

[Manage Uploads](#)
[All Uploads](#)
[Rejected Records](#)
[Rare Fish](#)
[Stocked Fish Data](#)
[Antennas](#)
[Rare Fish Site-Effort](#)
[Flagged Records](#)
[Individual List](#)
[Upload Rules](#)

Manage Uploads

Only Database Manager can fix rejected and flagged records, and change upload rules.

All Uploads

Show entries

Upload ID	Study	Uploaded By	Upload Date	Upload Type	Source File	Clean File
68	3 Species Surveys	Johnke, Ben	2017-01-11 16:33:21 PM	Rare Fish Site Effort Data	sampling_2017GOOD(3).xlsx	Clean_sam
67	3 Species Surveys 2013	Johnke, Ben	2017-01-11 16:30:05 PM	Rare Fish Site Effort Data	sampling_2017GOOD(2).xlsx	Clean_sam
66	3 Species Surveys 2013	Johnke, Ben	2017-01-11 16:28:10 PM	Rare Fish Site Effort Data	sampling_2017GOOD(1).xlsx	Clean_sam
65	ADISMP	Johnke, Ben	2017-01-11 16:21:14 PM	Rare Fish Site Effort Data	sampling_2017GOOD.xlsx	Clean_sam
64	amy stocking	Greenwell, Amy	2017-01-11 15:55:34 PM	Rare Fish Site Effort Data	sampling_2017GOOD(1).xlsx	Clean_sam

Showing 1 to 5 of 65 entries

Previous 1 2 3

- Rare Fish**

Upload IDs (>100 is slow): Error Type:

--All-- ▾

Show 5 entries

<input type="checkbox"/>	Upload ID	Study	Uploaded By	Upload Date	Upload Status	File Name	Error Type	PIT Tag 400	PIT
<input type="checkbox"/>	54	Animas River Sampling - BOR	Gurung, Puja	2017-01-11 12:42:15 PM	Rejected	Copy of SJ_RareFish_NNF_NMFWCO_155.xlsx	Tag Conflict (new tag not new)		3D911
<input type="checkbox"/>	54	Animas River Sampling - BOR	Gurung, Puja	2017-01-11 12:42:15 PM	Rejected	Copy of SJ_RareFish_NNF_NMFWCO_155.xlsx	Tag Conflict (new tag not new)		3D911
<input type="checkbox"/>	54	Animas River Sampling - BOR	Gurung, Puja	2017-01-11 12:42:15 PM	Rejected	Copy of SJ_RareFish_NNF_NMFWCO_155.xlsx	Tag Conflict (new tag not new)		3843E
<input type="checkbox"/>	54	Animas River Sampling - BOR	Gurung, Puja	2017-01-11 12:42:15 PM	Rejected	Copy of SJ_RareFish_NNF_NMFWCO_155.xlsx	Tag Conflict (new tag not new)		3843E
<input type="checkbox"/>	54	Animas River Sampling - BOR	Gurung, Puja	2017-01-11 12:42:15 PM	Rejected	Copy of SJ_RareFish_NNF_NMFWCO_155.xlsx	Tag Conflict (new tag not new)		3843E

< >

Showing 1 to 5 of 463 entries

Previous
 1
 2 3 4 5 ... 93 Next

- Flagged records should be reviewed by Database Managers and unflagged if determined to be satisfactory.

Flagged Records									
Individual List									
Show 5 entries									
id	Current Tag	Species	Year Class	Sex	Last Encounter Type	Last Encounter Date	Last Encounter River	Notes	Options
5	3D91C2C2DB432	Xyrauchen texanus	2007	Female	Capture	2015-06-11	Lake Powell		View Details Delete
0	3D91C2C2D0E93	Xyrauchen texanus		Male	Capture	2015-03-31	Colorado River		View Details Delete
6	3D9257C6A7A3B	Xyrauchen texanus	2006	Female	Capture	2015-10-13	San Juan River		View Details Delete
Showing 1 to 3 of 3 entries									
Previous 1 Next									

- Upload rules for numeric fields can be adjusted by Database Managers. Most text fields are ruled by look-up tables or specific details coded into the website (ex. 13 digit requirement for a 134 khz tag).

Upload Rules		
Enable Edit Mode		
Only Database Manager can update/edit upload rules.*		
Show 25 entries		
Search: <input type="text"/>		
Field Name	Minimum Value	Maximum Value
Conductivity	.0	4000.0
Length	.0	1800.0
pHRiver	.0	14.0
pHTank	.0	14.0
RiverMile	-188.5	450.0
RiverTemperature	.0	30.0
StandardLength	.0	1800.0
TankTemperature	.0	30.0
TemperedTime	.0	10800.0
Turbidity	.0	1900.0
UTMX	.0	1000000.0
UTMY	3920000.0	4850000.0
Weight	.0	27500.0
Showing 1 to 13 of 13 entries		
Previous 1 Next		

- **New filter to Browse Fish by Individual ID or set of IDs.**

Browse Fish

You are viewing **969,849** of **969,849** fish. [View Related Encounters](#)

How would you like to filter results?

IDs (>100 is slow):

Tags (>100 is slow):

Species:
--All--

Federal Status:
--All--

Year Class:
--All--

Last Encounter Type:
--All--

Last Encounter River:
--All--

Source Org (hatchery):
--All--

Harvest Type:
--All--

Release Type:
--All--

Mortality Flag:
--All--

Filter Results

Clear Filters

Download

New Fish

Show **50** entries

ID	Current Tag	Species	Year Class	Sex	Last Encounter Type	Last Encounter Date	Last Encounter River
29981	3D91C2C660CD0	Xyrauchen texanus		Male	Capture	2010-04-08	San Juan River

- **New filter to Browse Encounters by Encounter ID or set of IDs.**

Browse Encounters

You are viewing **1,377,023** of **1,377,023** encounters. [View Related Individuals](#)

How would you like to filter results?

IDs (>100 is slow):

Tags (>100 is slow):

Species:
--All--

Encounter Type:
--All--

River:
--All--

Basin:
--All--

River Mile Down:

River Mile Up:

Study:
--All--

Sampling/Stocking Org:
--All--

Parent Org:
--All--

PIA Location:
--All--

Date Range (YYYY-MM-DD):
 to

Harvest Type:
--All--

Release Type:
--All--

Year Class:
--All--

Federal Status:
--All--

Mortality Flag:
--All--

Recapture:
--All--

Filter Results

Clear Filters

Download

New Encounter

Show **50** entries

ID	Current Tag	Species	Encounter Type	Date	River	River Mile	Antenna	Notes
1464933	3DD003BC43849	Unidentified	Detection	2016-12-01	Green River	128.3	Tusher Diversion	

- **New system for flagging records** – Data flags have been reorganized in the data tables and on the webpage. There are three flag options now for Individuals. Flags for other features, such as Encounters or Tags, and flag characteristics will be adjusted as details are ironed out by Database Managers.
 - Upload flags are generated by the system during Uploads. Currently, a sex conflict will trigger an Upload flag. Only the system can set Upload flags and only Database Managers can uncheck them.

- Invalid records were flagged during the original import to STReaMS in 2015 for records with species conflicts (new records with this conflict will get rejected). Only Database Managers can edit Invalid flags.
- User flags can be checked by any User that sees an error or suspects an error but does not have permission to edit the record in STReaMS.

Harvest type:

Release type:

Year class:

Year class mixed? ☐

Grow out ponds:

Hatchery	Pond name	Mixed pond?	Notes	Options
Add a new pond: --Select--				

Upload flag: ☐

Invalid record? ☒

Set to Invalid during original 2015 batch upload due to species conflicts

User Flag? ☐

- **Delete button is disabled for PIA Locations with data.**

📍 Browse PIA Location

Show entries Search:

ID	Array Name	Type	Application	River	Options
21	Hogback Diversion	By-pass Canal	Entrainment monitoring	Hogback Canal	<input type="button" value="View Details"/> <input type="button" value="Delete"/>
2	Green River Canal at Tusher Diversion	Canal	Entrainment monitoring	Green River Canal	<input type="button" value="View Details"/> <input type="button" value="Delete"/>
19	Maybell Canal	Canal		Maybell Canal	<input type="button" value="View Details"/> <input type="button" value="Delete"/>
9	Colorado River Price-Stubbs	Fish Passage	Fish passage monitoring	Colorado River	<input type="button" value="View Details"/> <input type="button" value="Delete"/>

- Toggle between PIA Locations and Arrays in the PIA Location list.

Browse PIA Locations (viewing related PIA Location Arrays)

<< Back to PIA Locations

New PIA Location

Show **25** entries

Search:

ID	Name	PIA Location	Orientation	River	River Mile	Options
13	Price-Stubb	Colorado River Price-Stubb		Colorado River		View Details
17	Near Disappointment	Dolores River		Dolores River		View Details
16	Rio Mesa Ctr	Dolores River		Dolores River		View Details
2	Below siphon	Green River Canal at Tusher Diversion		Green River Canal		View Details
1	Flume	Green River Canal at Tusher Diversion		Green River Canal		View Details
28	Hogback By-pass Facility	Hogback Diversion		Hogback Canal		View Details
29	Hogback Intake	Hogback Diversion		Hogback Canal		View Details

- Primary and Secondary contacts are listed on PIA Location page.

Edit Tusher Diversion PIA Location

A "PIA Location" is the physical and semi-permanent position of a passive interrogation array, antenna, or portable device. If an interrogation device is left in one place for more than a day, it is considered a PIA location.

Required fields are indicated with an * .

PIA Location Information

Name*:

Code:

Type*:

Application:

Description:

River*:

Number of arrays:

Inactive? ☐

Approximate operational date range: to

This is a broad date range for the entire system. Outages are documented on the Antenna Array page.

Primary Contact:


Primary Contact Email:

Secondary Contact:

Secondary Contact Email:

Green River Diversion Antenna Array Layout
Red = Antenna Locations
Blue = Other facilities

- **Spatial Attributes are moved from the PIA Location page to the Array page** – To better align the database with PIA configurations, River mile, Latitude, Longitude, UTM X, UTM Y and UTM Zone have been moved from the PIA Location page to the Array page.

 **Edit Tusher Diversion PIA Array**

Required fields are indicated with an *.

PIA Array Information

Name*:

Code:

Orientation:

Description:

River:

River mile:

Latitude:

Longitude:

UTM X:

UTM Y:

UTM Zone:

Upload Date:

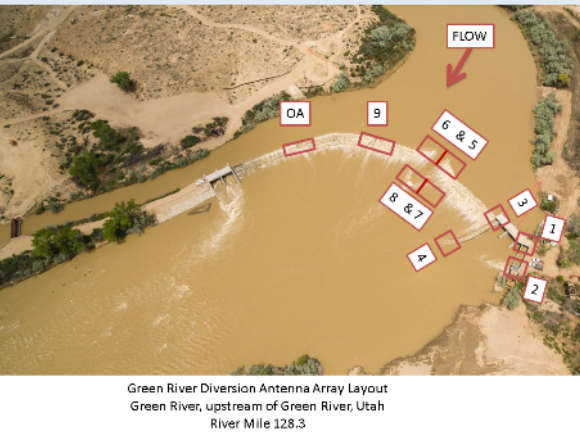
Data Date:

DBA Notes:


Inactive? ☐

Approximate operational date range:
 to

This is a broad date range for the Array. Outages are documented below.



- **Dummy tags are stored at the Antenna level** – Dummy tags were moved from the Array page to the Antenna table to better represent how PIAs are configured.

 **Antennas**

ID	Code*	Sub-array	Dummy Tag	Label	Options
90	1	Water Wheel	3E70000001D01	Water Wheel Raceway - Upstream Antenna (Pass-thro	Delete
91	2	Water Wheel	3E70000001D02	Water Wheel Raceway - Downstream Antenna (Pass-tl	Delete
92	3	Fish Passage	3E70000001D03	Upstream Fish Passage - Upstream Antenna - 10 ft wic	Delete
93	4	Fish Passage	3E70000001D04	Upstream Fish Passage - Downstream Antenna - 10 ft	Delete
94	5	Boat Passage	3E70000001D05	Boat Passage - Eastern Upstream Antenna - 15 ft wide	Delete
95	6	Boat Passage	3E70000001D06	Boat Passage - Western Upstream Antenna - 15 ft wide	Delete
96	7	Boat Passage	3E70000001D07	Boat Passage - Eastern Downstream Antenna - 15 ft w	Delete
97	8	Boat Passage	3E70000001D08	Boat Passage - Western Downstream Antenna - 15 ft v	Delete

- Outages are tracked for each Array.

🕒 Outages

ID	Begin Outage Date	End Outage Date	Options
1	11/16/2016 12:00:00 AM	04/07/2017 12:00:00 AM	Delete
			*new

Save

- New filter to Browse Tags by Tag Status.

🔍 Browse Tags

You are viewing 1,436,947 of 1,436,947 tags. How would you like to filter results?

Tags (>100 is slow):

Lot codes:

Status:

--All--

☐ Select all
 ☐ Not deployed
 ☐ Active
 ☐ Shed

Filter Results

Clear Filters

Download

Show 50 entries

Tag ID	Tag Code	Tag Type	Tag Status	Lot Code	Deploy Date	Deploy River	Recipient Person	Recipient Org	Options
647835	3D91C2D04F250	134 khz	Active	MISC09	2009-06-30	Yampa River, RM 31.5	Jones, Tildon	FWS - Vernal	View Details
647836	3D91C2D03D923	134 khz	Active	MISC09	2009-07-07	Yampa River, RM 42.0	Jones, Tildon	FWS - Vernal	View Details

- **Enhancements to Tag Details page** – Tag Lots are now editable by Database Managers. A new status for Shed Tags and a field for Notes have been added. Related Tag Lots and Encounters are now accessible through the page.

Edit 3DD003BC33AEF Tag

Required fields are indicated with an *.

Tag Information

Tag code*: 3DD003BC33AEF

Tag type*: 134 khz

Tag status*: Shed

Associated tag lot: AAA023125

Associated individual: ID = 175391, Xyrauchen texanus

Deploy date: 10-08-2014 00:00

River where tag deployed: San Juan River

River mile where tag deployed: 196.0

Deployed by:

Notes: Tag was stuck in Antenna 1 of Hogback By-pass Facility PIA and retrieved by Peter Mackinnon on 9/30/2015.

[Save](#) [Delete](#)

Other Details

Tag Lots

Show 10 entries Search:

TagLot ID	Lot number	Recipient name	Recipient organization	Ship date	Purpose	Order code	Options
8729	AAA023125	Gross, Mike	FWS - Grand Junction	01/13/2014 12:00:00 AM	BT & RZ STOCK	SO14916	View Details

Showing 1 to 1 of 1 entries Previous 1 Next

Encounters

Show 25 entries Search:

ID	Current Tag	Species	Encounter Type	Date	River	River Mile	Antenna	Notes	Options
875957	3DD003BC33AEF	Xyrauchen texanus	Stocking	2014-10-08	San Juan River	196.0		Ourray NFH Grand Valley Unit, Hard Released at Bloomfield as part of the 2014 Stocking Comparison	View Details Delete
1141519	3DD003BC33AEF	Xyrauchen texanus	Detection	2015-08-22	Hogback Canal		Hogback Diversion	Tag has been shed from fish and was found stuck in Antenna 1.	View Details Delete

Showing 1 to 2 of 2 entries Previous 1 Next

- **Stocking Events are active on the Studies page** – Review the list of Stocking Events for a Study, create a new Event, or View Details.

Edit ONFH Randlett 2015 BT Stocking Study

[Personnel](#)

[Samples](#)

[Stocking Events](#)

[Encounters](#)

Stocking Events

[New](#)

Show 10 entries Search:

ID	Stocking Number	Date	Stocked Species	River	River Mile	Options
22	FWSRH20150430BT	05/02/2015 12:00:00 AM	Gila elegans	Green River	262.0	View Details Delete
23	FWSRH20150610BT	06/12/2015 12:00:00 AM	Gila elegans	Green River	262.0	View Details Delete

Editing FWSRH20150430BT

Required fields are indicated with an * .

Stocking Number: FWSRH20150430BT

Date: 2015-05-02

Species Stocked*: Gila elegans

Principle Biologist: Fry, Matthew

River*: Green River

Reach: --Select--

River Mile: 262.0

River Right Or Left:

Habitat Type: --Select--

Latitude:

Longitude:

UTMX:

UTMY:

UTM Zone:

River Temperature: 16.0

Tank Temperature: 14.1

pH River: 8.1

pH Tank: 8.1

Tempered Time (in minutes): 60

Stock Year: 2015

Save Delete

- **Enhancements to Organization page** – Table of Contents has been added and Tag lots are linked.

Edit the Colorado Parks and Wildlife Organization

Personnel

Studies

Tag lots

135	YA NP Removal	Yampa River	View Details Delete
171	Yellow Jacket Canyon	San Juan River	View Details Delete

Showing 1 to 16 of 16 entries

Previous 1 Next

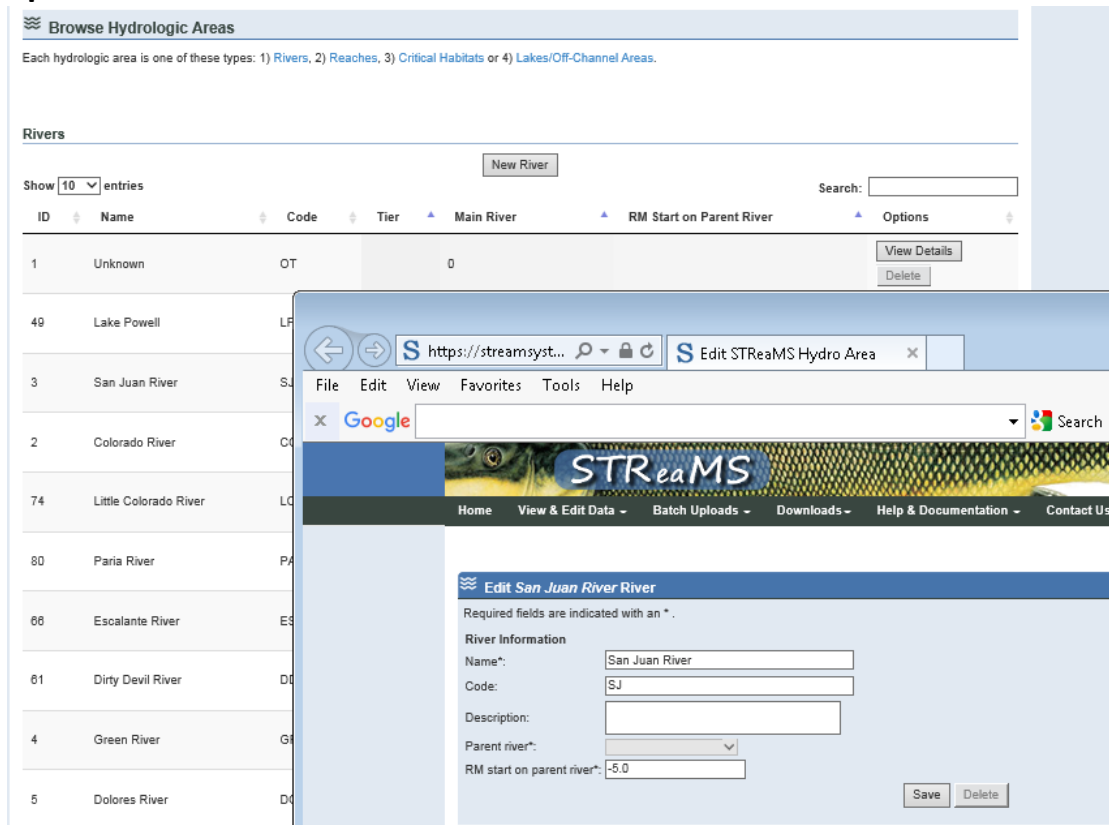
Tag lots

Show 10 entries

Search:

ID	Lot Code	Recipient Name	Recipient Organization	Ship Date	Purpose	Order Code	Options
9238	AAA013200		Colorado Parks and Wildlife	01/13/2014 12:00:00 AM	MUMMA BT	SO13657	View Details
9239	AAA013201		Colorado Parks and Wildlife	01/13/2014 12:00:00 AM	MUMMA BT	SO13657	View Details
9240	AAA013202		Colorado Parks and Wildlife	01/13/2014 12:00:00 AM	MUMMA BT	SO13657	View Details
9241	AAA013203		Colorado Parks and Wildlife	01/13/2014 12:00:00 AM	MUMMA BT	SO13657	View Details
9242	AAA013204		Colorado Parks and Wildlife	01/13/2014 12:00:00 AM	MUMMA BT	SO13657	View Details
9243	AAA013205		Colorado Parks and Wildlife	01/13/2014 12:00:00 AM	MUMMA BT	SO13657	View Details
9244	AAA013206		Colorado Parks and Wildlife	01/13/2014 12:00:00 AM	MUMMA BT	SO13657	View Details
9245	AAA013207		Colorado Parks and Wildlife	01/13/2014 12:00:00 AM	MUMMA BT	SO13657	View Details
9246	AAA013208		Colorado Parks and Wildlife	01/13/2014 12:00:00 AM	MUMMA BT	SO13657	View Details
9247	AAA013209		Colorado Parks and Wildlife	01/13/2014 12:00:00 AM	MUMMA BT	SO13657	View Details

- **When you click to View Details for a record in a Lookup list, the page opens in a new tab or window.**



Bugs Fixes and Issues

- **Lists are optimized to prevent web pages from timing out** - Some records with lots of Encounters (ex. Razorback Sucker Augmentation Study with 145,000 Encounters) were timing out before lists of Encounters could be generated. Other pages were slow to build. All lists of data throughout the website have been optimized to prevent performance issues. Pages will load much quicker now.
- **Hide River miles for Registered Users in “Other Encounters” list** - When viewing an Encounter as a Registered User (lowest role with limited viewing privileges), river miles were excluded from the details but were visible in the list of Other Encounters. This field has been removed to be consistent with the rest of the site.
- **Calendar pickers have been fixed on PIA Locations page** – The calendar picker was not working correctly in several places on the PIA Location and Array pages.